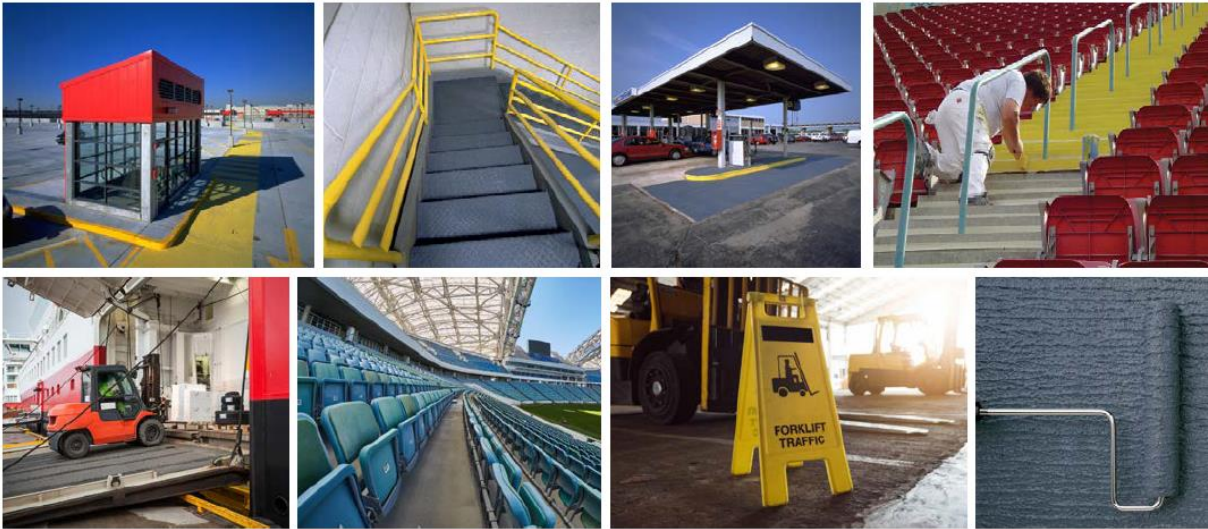


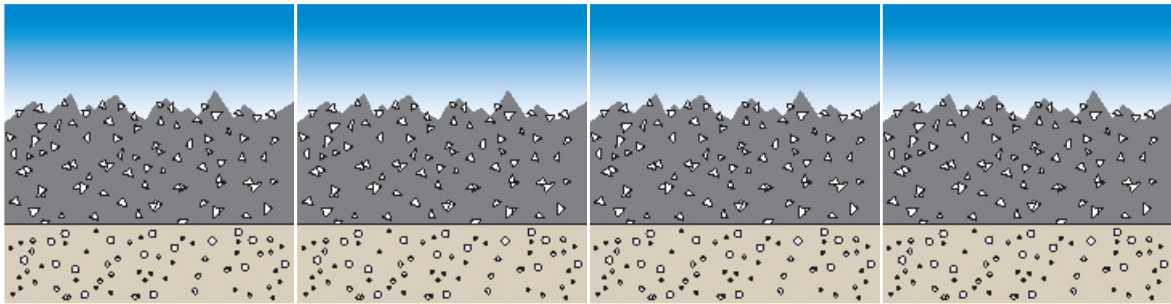
GacoFloor™

End User's Guide for Anti-Slip Protective Coatings



What makes our products last!

GacoFloor products are designed for long-term service. That means the coating will perform its anti-slip function for the entire life of the coating! This happens because Gaco uses one of the most durable materials (aluminum oxide and Kevlar). These two key ingredients are part of our system that helps add years of durable and safe usage in our anti-slip coatings.



This technology was developed for the U.S. Navy for every one of its aircraft carriers and continues to be used today.

The drawback to most anti-slip coatings is the design. Most systems used today incorporate a broadcast aggregate. This is usually silica sand which is very weak. Under normal traffic, silica will break down within months, where aluminum oxide will last five times longer. The other issue with a broadcast system is its construction. First, you have a base coat (primer), then a coat of epoxy or urethane in which the aggregate is broadcast into, then a final topcoat of epoxy or urethanes to hold in the aggregates. The problem lies with the thin layer of aggregate that can easily be worn through due to heavy traffic.

Your GacoFloor System contains the aluminum oxide throughout the coating layer, allowing for long term wear by extremely heavy traffic while maintaining the same profile from the beginning to the end. No other system has this design or the ability to function as effectively as GacoFloor anti-slip products!

Commercial Applications

Markets

Suggested Products

1. Schools

- Showers GFAS-175
- Locker rooms GFAS-175
- Pool areas GFAS-175
- Auditorium stairs GFAS-75, GFAS-150 Low VOC, GFAS-175
- Loading docks GFAS-150 Low VOC, GFAS-250, GFAS-2500
- Shop areas GFAS-150 Low VOC, GFAS-175
- Walkways GFAS-75, GFAS-150 Low VOC,
- Handicap parking GFAS-75
- Temporary classroom stairs GFAS-75, GFAS-150 Low VOC
- Boiler rooms/Maintenance GFAS-150 Low VOC, GFAS-175
- Fueling areas GFAS-250
- Ramps GFAS-150 Low VOC, GFAS-250, GFAS-2500
- Ceramic/quarry tile GFAS-175
- Stadium Stairs GFAS-75, GFAS-150 Low VOC

2. Hospitals

- Walkways GFAS-75, GFAS-150 Low VOC
- Handicap parking GFAS-75
- Loading docks GFAS-150 Low VOC, GFAS-250, GFAS-2500
- Boiler room/Maintenance GFAS-150 Low VOC, GFAS-175
- Parking garage GFAS-250
- Parking garage stairs GFAS-150 Low VOC
- Autoclaves/Instrument cleaning areas GFAS-2500
- Fueling areas GFAS-250
- Ramps GFAS-150 Low VOC, GFAS-250, GFAS-2500
- Helicopter Pads GFAS 250

3. Retail Stores/Restaurants

- Walkways GFAS-75, GFAS-150 Low VOC
- Loading docks GFAS-150 Low VOC, GFAS-250, GFAS-2500
- Ramps GFAS-150 Low VOC, GFAS-250, GFAS-2500

Markets

Suggested Products

4. Hotels/Motels & Property Management

- Pool decks GFAS-175
- Walkways GFAS-75, AS-150 Low VOC
- Balconies GFAS-75, GFAS-175, GFAS-150 Low VOC
- Boiler room/maintenance GFAS-150 Low VOC, GFAS-175
- Check-in parking GFAS-150 Low VOC, GFAS-250, GFAS-2500
- Handicap parking GFAS-75
- Ramps GFAS-150 Low VOC, GFAS-250
- Parking garage GFAS-250,
- Parking garage stairs GFAS-150 Low VOC, GFAS-250
- Loading dock GFAS-150 Low VOC, GFAS-250, GFAS-2500
- Helicopter Pads GFAS 250

5. Parking Garages

- Handicap parking GFAS-75
- Deck GFAS-250, GFAS 2500
- Stairs GFAS-150 Low VOC

6. Entertainment/Amusement Parks

- Attraction ramps GFAS-150 Low VOC
- Walkways GFAS-75, GFAS-150 Low VOC
- Water park areas GFAS-175 (Contact Gaco for immersion)
- Handicap parking GFAS-75
- Wet attractions, e.g., marine exhibits GFAS-175

7. Stadiums

- Stairs GFAS-150 Low VOC
- Loading dock GFAS-150 Low VOC, GFAS-250, GFAS-2500
- Handicap parking GFAS-75
- Pedestrian ramps GFAS-150 Low VOC, GFAS-175
- Concession area GFAS-150 Low VOC, GFAS-175, GFAS-2500

8. Auditoriums

- Stairs GFAS-75, GFAS-150 Low VOC
- Loading dock GFAS-150 Low VOC, GFAS-250
- Handicap parking GFAS-75
- Ramps GFAS-150 Low VOC, GFAS-250

Markets

Suggested Products

9. Airports

- Walkways
- Fuel Storage Area
- Luggage trucks
- Hangars
- Hangar scaffolding
- Passenger ramps
- Helicopter Pads

GFAS-75, GFAS-150 Low VOC
GFAS-2500
GFAS-150 Low VOC
GFAS-175, GFAS-2500
GFAS-150 Low VOC
GFAS-75 for wood, GFAS-150 for wood or metal
GFAS 250

*See Auto Rental Facilities

10. Truck Stops

- Wash bays
- Fueling area
- Showers
- Walkways

GFAS-250
GFAS-250
GFAS-175
GFAS-75, GFAS-150 Low VOC

11. Auto Rental Facilities

- Car wash area
- Fueling area

GFAS-250
GFAS-250

12. Floor Coating Contractors

- Secondary containment
- Anti-slip coatings
- Helicopter Pads

GFAS-2500 (See chemical resistance)
All products
GFAS 250

13. General Contractors

- Temporary wood ramps or walkways

GFAS-75, GFAS-150 Low VOC

14. Municipalities & Transportation Authorities

- Bus or truck wash bays
- Fueling areas
- Railway passenger pads and walkways
- Tunnel maintenance walkways
- Railway diesel maintenance shop
- Truck beds, lift gates
- Construction equipment
- Toll booth lanes
- Helicopter Pads

GFAS-250, GFAS-2500
GFAS-250, GFAS-2500
GFAS-150 Low VOC, GFAS-250
GFAS-75, GFAS-150 Low VOC
GFAS-250, GFAS-2500
GFAS-150 Low VOC
GFAS-150 Low VOC
GFAS-250
GFAS 250

Markets**Suggested Products****15. Trucking Distribution Centers/Loading Areas**

- Docks and dock levelers GFAS-150 Low VOC, GFAS-250, GFAS-2500

16. Firehouses

- Wash bays GFAS-250, GFAS-2500
- Helicopter Pads GFAS 250

17. Fitness Centers

- Showers GFAS-175
- Locker rooms GFAS-175
- Pool areas GFAS-175

18. Ski Resorts

- Locker rooms GFAS-175
- Lodge GFAS-150 Low VOC, GFAS-175, GFAS-250
- Helicopter Pads GFAS 250

Industrial Applications

Markets

Suggested Products

1. Pulp and Paper

- Machine wet end
- Ramps
- Loading dock
- Sidewalks

GFAS-250, GFAS-2500
GFAS-150 Low VOC, GFAS-250, GFAS-2500
GFAS-150 Low VOC, GFAS-250, GFAS-2500
GFAS-75, GFAS-150

2. Water/Wastewater Treatment

- Catwalks, stairs
- Exterior walkways
- Interior walkways
- Sludge room
- Caustic storage area
- Storage tank roof
- Equipment truck gate
- Showers

GFAS-250
GFAS-75, GFAS-150, GFAS-175
GFAS-250
GFAS-250, GFAS-2500
GFAS-2500
GFAS-75, GFAS-150
GFAS-150 Low VOC
GFAS-175

3. Food and Beverage

- Bottling/canning areas
- Locker rooms
- Machine areas
- Loading dock
- GF

GFAS-250, GFAS-2500
GFAS-175
GFAS-150 VOGFC, GFAS-250, GFAS-2500
GFAS-150 VOC, GFAS-250, GFAS-2500

Note: Fish and Poultry plants are notoriously in danger of slips and falls

4. Mining

- Equipment non-slip
- Stairs, platforms

GFAS-150 Low VOC
GFAS-150 Low VOC, GFAS-250

5. Auto Manufacturing

- Machining areas
- Loading dock
- Sidewalks
- Handicap parking
- Locker room

GFAS-150 Low VOC, GFAS-250
GFAS-150 Low VOC, GFAS-250
GFAS-75, GFAS-150 Low VOC
GFGFAS-75
GFAS-175

Markets

Suggested Products

6. Pharmaceutical

- Production areas
- Wash down rooms
- Locker rooms
- Loading dock

GFAS-2500
GFAS-250, GFAS-2500
GFAS-175
GFAS-150 Low VOC, GFAS-250, GFAS-2500

7. Chemical Manufacturing

- Stairs
- Secondary Containment
- Loading dock
- Ramps (vehicular)

GFAS-150 Low VOC
GFAS-2500 (See chemical resistance)
GFAS-150 Low VOC, GFAS-250, GFAS-2500
GFAS-250, GFAS-2500

8. Petroleum

- Storage tank roof
- Storage tank stairs/platforms
- Loading rack pad
- Service station fueling island
- Marine dock areas
- Fuel barge decks
- Off-shore platforms
- Secondary containment
- Helicopter Pads
-

GFAS-75, GFAS-150 Low VOC
GFAS-150 Low VOC
GFAS-250
GFAS-250
GFAS-250
GFAS-250
GFAS-2500 (See chemical resistance)
GFAS 250

9. Marine (Non-Military)

- Stairs
- Dock areas
- Decks
- Pool area (Cruise liner)
- Helicopter Pads

GFAS-150 Low VOC
GFAS-175, GFAS-150 Low VOC, GFAS-250
GFAS-150 Low VOC, GFAS-250
GFAS-175
GFAS 250

10. Bridge Authorities

- Sidewalks and pedestrian areas
- Toll booth pads
- Equipment trucks

GFAS-75, GFAS-150 Low VOC, GFAS-250
GFAS-250
GFAS-150 Low VOC

Markets

Suggested Products

11. Power Utilities

- Sidewalks
- Fuel Storage tank roof/stairs
- Secondary Containment
- Fleet vehicle bumper/beds
- Wash down areas
- Hydro platforms
- Boiler rooms

GFAS-75, GFAS-150 Low VOC
GFAS-75, GFAS-150 Low VOC
GFAS-2500 (See chemical resistance)
GFAS-150 Low VOC
GFAS-250, GFAS-2500
GFAS-250, GFAS-2500
GFAS-150 Low VOC, GFAS-175

12. Fleet Maintenance

- Cement mixing vehicles
- Automotive carriers
- Airport transport vehicles
- Highway tool truck beds
- Construction equipment
- Tree cutting vehicles

GFAS-150 Low VOC
GFAS-150 Low VOC
GFAS-150 Low VOC
GFAS-150 Low VOC
GFAS-150 Low VOC
GFAS-150 Low VOC

Which Anti-Slip Product to Select?

When choosing the best solution for your customers, needs, keep in mind 3 basic questions!

- 1) What is the nature of your customer's traffic?
- 2) What is the contamination / what is causing the loss in traction?
- 3) Finally, what is the substrate?

Nature of the Traffic

The heavier the traffic is the more there is a need for a durable system. Keep in mind that you also need to be aware of your customer's type of traffic and volume they deal with (i.e. your customer might have only foot traffic, but they have a very high volume – Transit Platforms/Train Stations).

Contamination

Is your customer working in water situations (paper mills, power plants)? Water poses a very low chemical issue but is the leading cause of slippery floors.

Do they work with food-by-products? All GacoFloor products including primers meet USDA & FDA regulations for incidental food contact.

Some customers, like paper mills, can have very corrosive chemicals that come in contact with walking and working surfaces. AST has two highly chemical resistant anti-slip products.

Substrate

The life of an anti-slip coating system is largely dependent upon the degree of surface preparation employed. No system, however, basic or exotic, can be expected to deliver a long-term service life when applied to a marginally prepared substrate. Over 80% of coating failures can be attributed directly to improper surface preparation. In general, the surface should be clean, dry and dull prior to the application of any coating system.

Product Summary

AS-75

One-component, water-based, acrylic elastomeric anti-slip coating for pedestrian traffic.

AS-150 Low V.O.C.

One-component, epoxy ester, re-coatable anti-slip coating for pedestrian and light vehicular traffic.

AS-175

Two-component, water-based epoxy, low profile anti-slip coating for pedestrian and barefoot traffic.

AS-250

Two-component, high-solids epoxy anti-slip with aggressive texture for all traffic.

AS-2500

Two-component, 100% solids, chemical resistant, aggressive epoxy anti-slip with no odor and cleanable finish for all traffic.

MS-7CZ Primer

Two-component, rust inhibitive epoxy metal primer

PS-100 EX

Two-component, 100% solids, moisture tolerant, VOC compliant, penetrating epoxy primer used to prime concrete and wood surfaces